



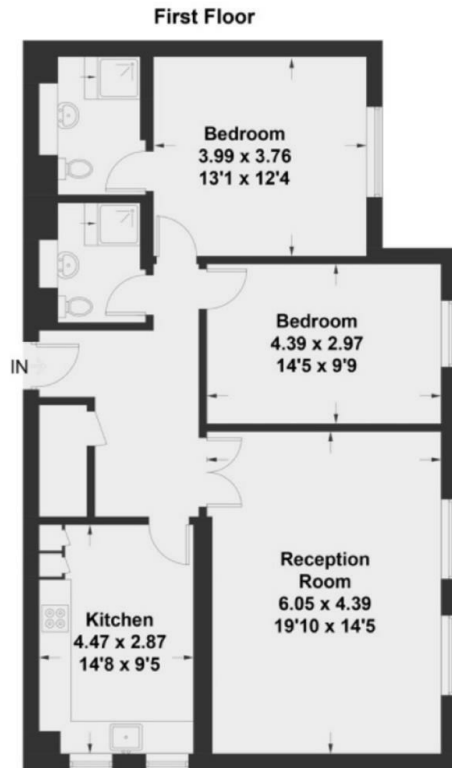
THE ESTATE COMPANY



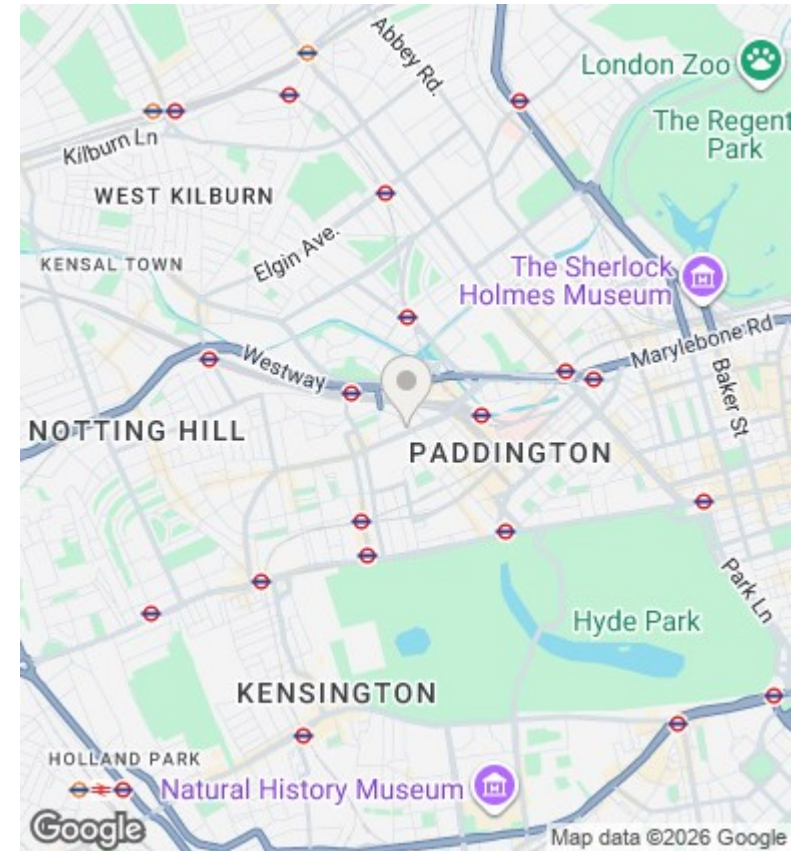
## Trinity Court, 170a Gloucester Terrace, W2 6HN

£4,500 Per Month

- 2 Bedrooms
- 1006 sq ft
- Short Walk to Paddington Station
- 2 Bathrooms
- Daytime Porter
- Furnished
- Underground Parking



Approximate Gross Internal Area = 93.5 sq m / 1006 sq ft



## Directions

## Viewings

Viewings by arrangement only. Call 020 7372 5000 to make an appointment.

## Council Tax Band

B

## EPC Rating:

C

Energy Efficiency Rating		Current	Potential
<i>Very energy efficient - lower running costs</i>			
(92 plus)	A		
(81-91)	B		81
(69-80)	C	73	
(55-68)	D		
(39-54)	E		
(21-38)	F		
(1-20)	G		
<i>Not energy efficient - higher running costs</i>			
<b>England &amp; Wales</b>		EU Directive 2002/91/EC	